

Search Supplement System

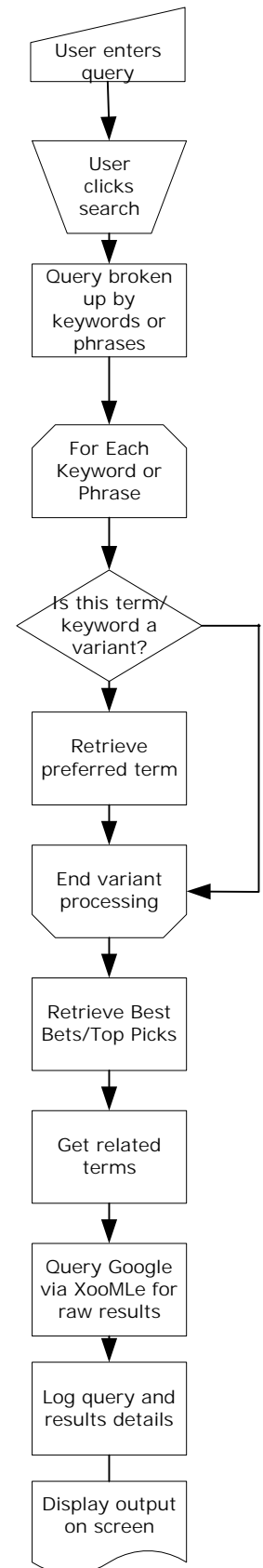
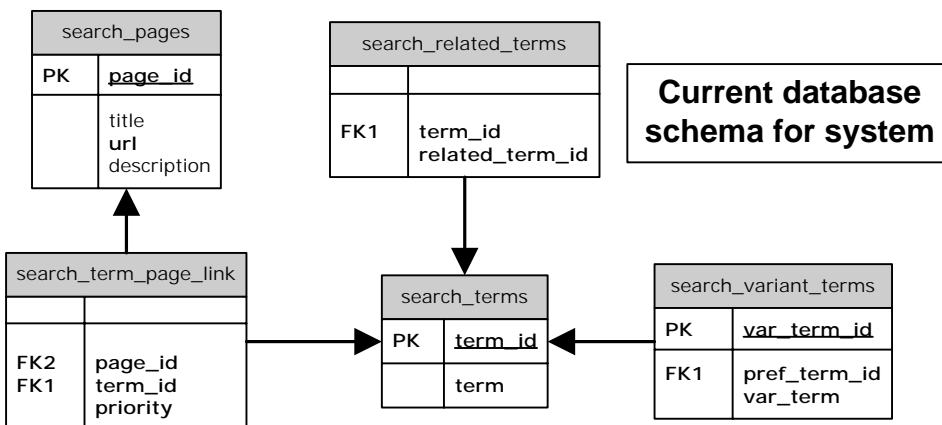
Currently, this search supplement system allows a website owner to add the **user-friendly** features of related terms ("**See Also**"), "**Best Bets**" (manually-selected pages which match specific keywords/phrases which may be searched) and **variant/preferred term matching**.

By performing some simple processing of the search query at the website (before querying a stand-alone search engine), we are able to **provide additional functionality**, while **still supplying automated/spider-driven results** from a stand-alone search engine. See the approximate process-flow to the right for more information about how the whole process fits together.

If you'd like to see the system in action, go to <http://www.dentedreality.com.au/search/> and try searching for "**blogger.com**". This should show all parts of this system in action, as described below;

- ❑ The search will be **refined to "blogger"** for the purpose of the site-processing,
- ❑ A number of **manually-selected pages** will be presented matching that search,
- ❑ **Related terms** (clickable to initiate another search) will be presented in the navigation panel to the left

If you'd like any more information about this project, please visit <http://www.dentedreality.com.au/notes/projects/ia/search/> or email beau@dentedreality.com.au.



Approximate Processing Sequence
 This diagram shows the approximate flow of processing required to integrate the Google search results with the "site-side" supplemental items of "Best Bets", "Related Terms" and "Variant->Preferred Matching".